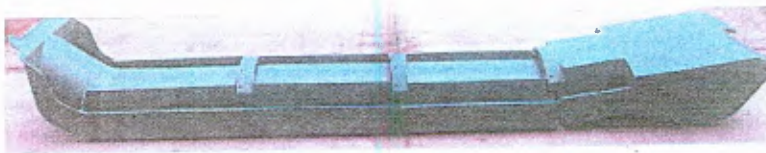
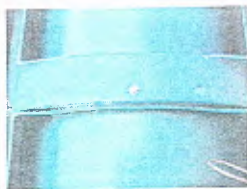


# SCOOP SLIDE INSTRUCTIONS

Place all sections of the slide upside down on a flat surface.



Fit each section together as tight as possible. Center the pieces. Screw one #12 x 1 1/4" screw through the center of each piece which will connect the slide together, but allow you to work with the slide to align the pieces.



Put a 2 x 4 (or 2 x 6 if you are building a longer slide) under the slide sides one side at a time.



Screw # 12 x 1" screws into the sides where indicated by pilot hole marks. Make sure parts are aligned before the screws are inserted. Start at one end where the two sections meet together. After screwing in the screw closest to the edges of the sections, then put the middle screw in the side, then add another section, making sure that it is aligned before inserting the screw. Make sure the screws are screwed into the wood straight and not crooked.



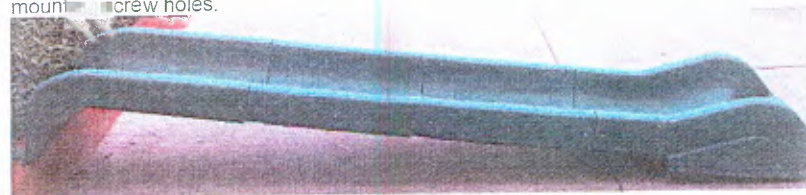
Courtesy of <http://www.Playkids.com>

Now, put the other 2 x 4 under the other side and repeat the process.

When last section is screwed together, finish screwing the bottom part of the sections together.



Mount the slide to your platform using two screws of your choice, making sure the heads are smooth so that they do not harm the children.. Place a 16 x 16", or larger, stepping stone flush with the ground for the base of the slide to set on. The brick should be level and square to the slide. This is to keep the slide height stable. If the slide keeps sinking into the dirt, it will put stress on the screw holes attaching the pieces together. Also, make sure that the slide is not lifted off the ground after attaching to the platform. Lifting will put stress on the mounting screw holes.



Any small gaps on the sides can be filled with silicone sealant. Fill, smooth, and let dry. This will prevent any gaps in which small finger could get caught. If properly aligned, there should be very few small gaps.

